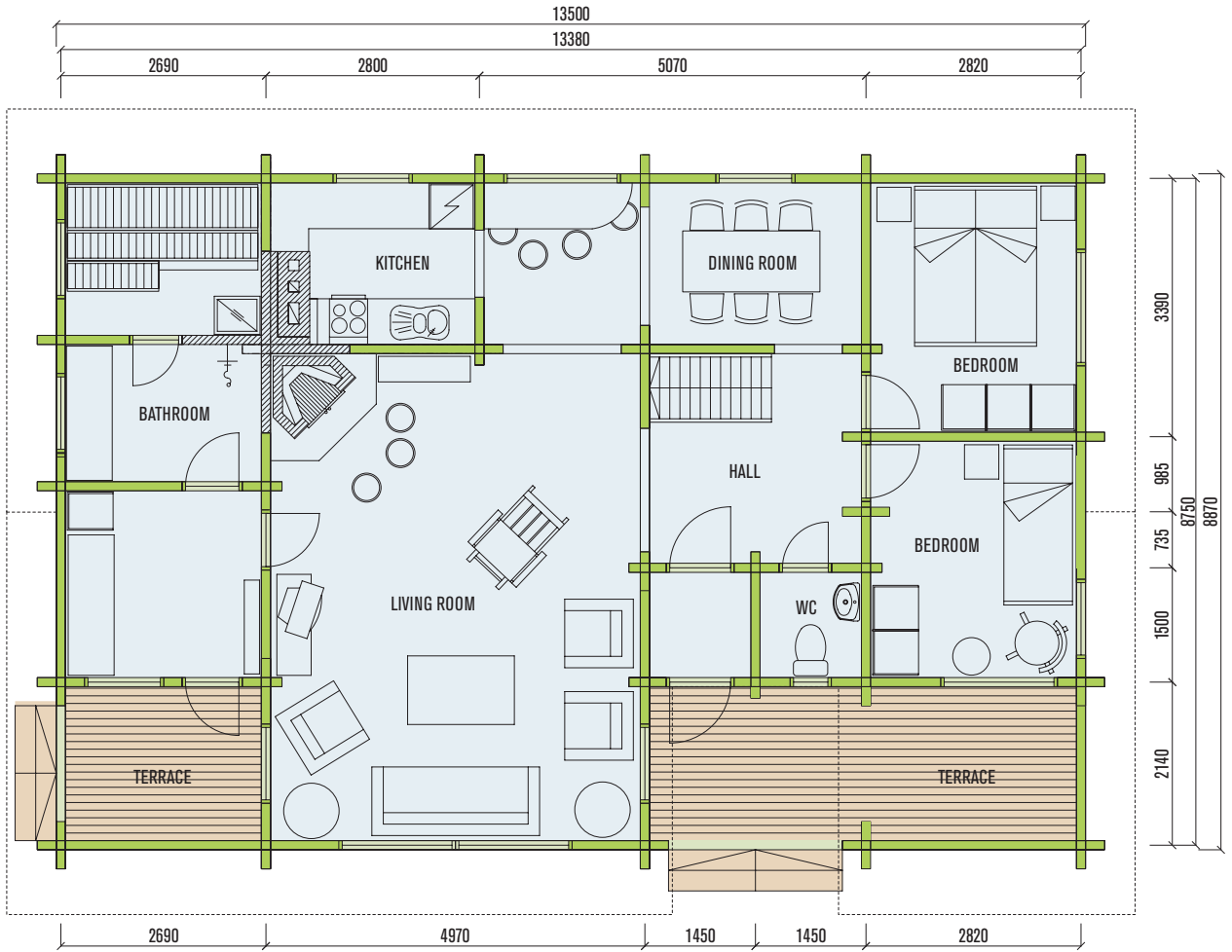




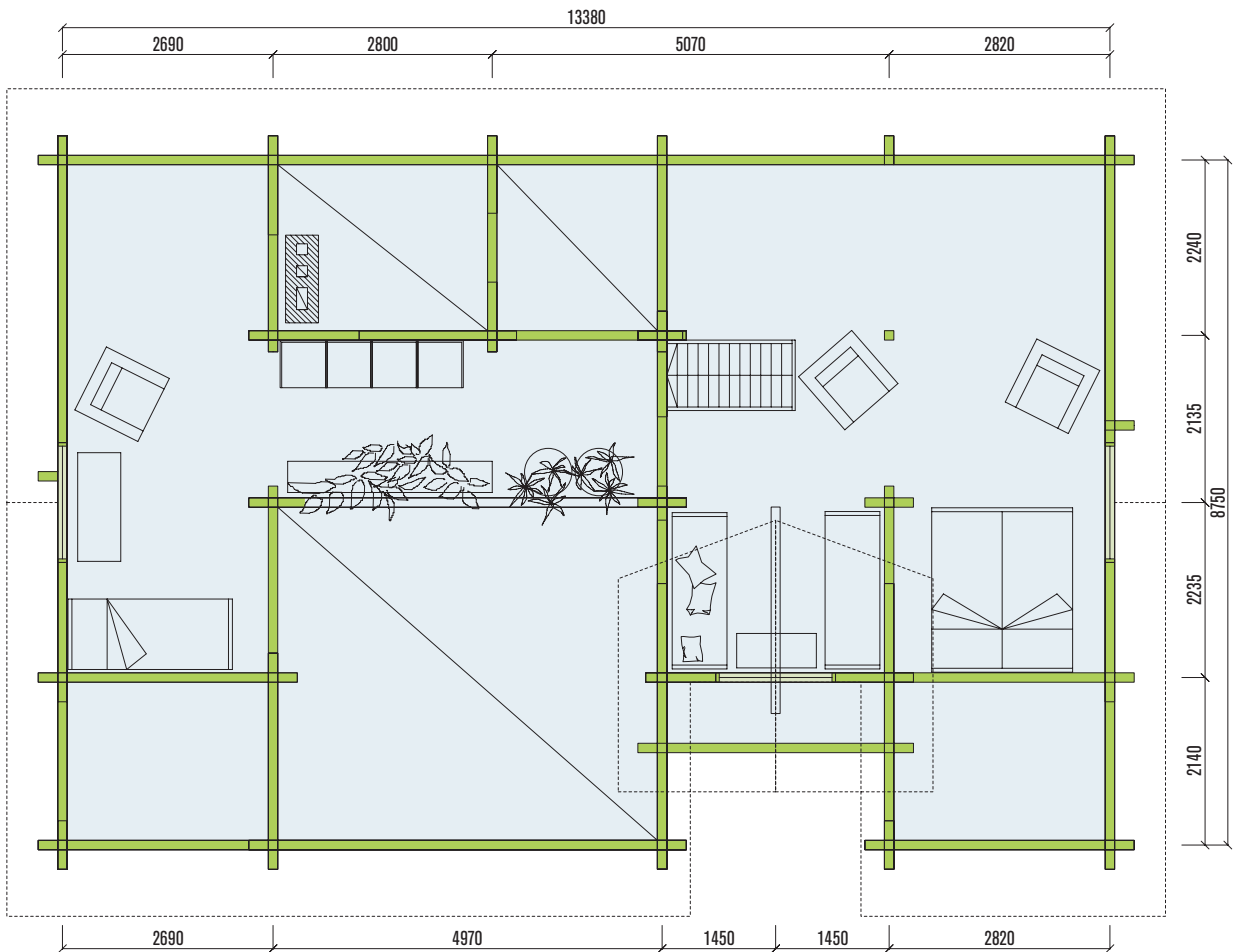
A rustic, country-style home, whose interiors are designed to fit in with a versatile urban lifestyle. The extreme feeling of spaciousness in the central area is the trademark of this home. The main living areas are designed to handle the hustle and bustle of daily life, while the bedrooms, a sauna, play areas and a family lounge are set away on the sides and second-floor loft for peace and quiet.



1st FLOOR

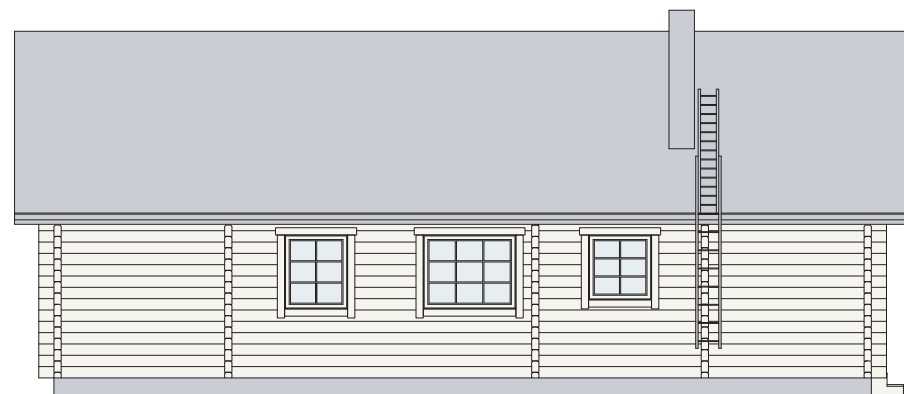
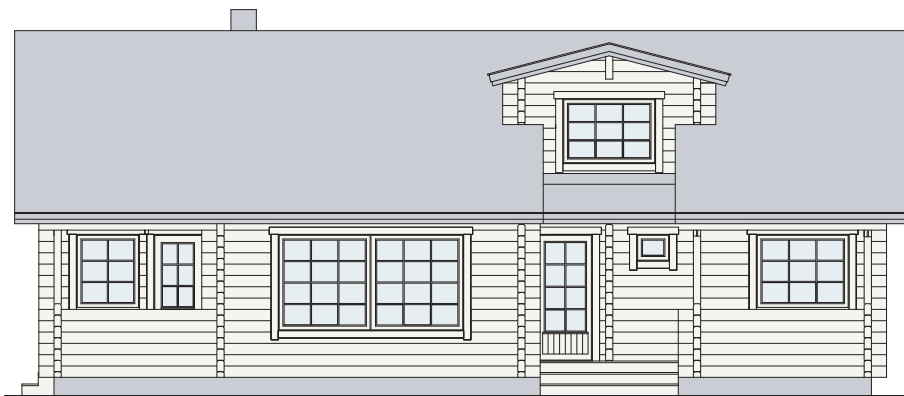
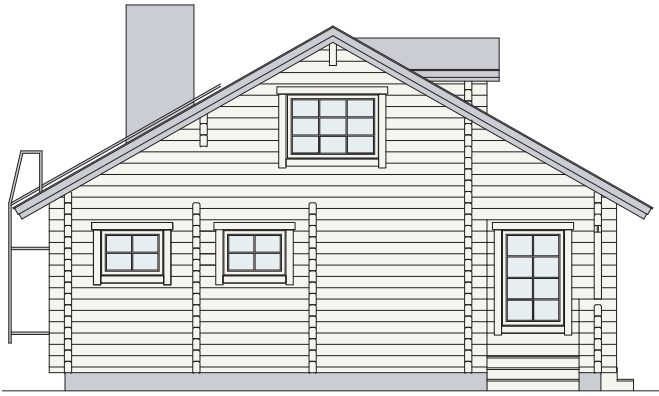


2nd FLOOR



GROUND AREA 119.5 m²
+ loft 84.5 m² including terrace 16.5 m²

KYOTO



GROUND AREA 119.5 m²
+ loft 84.5 m² including terrace 16.5 m²

KYOTO

INDIVIDUAL SERVICE, ALWAYS



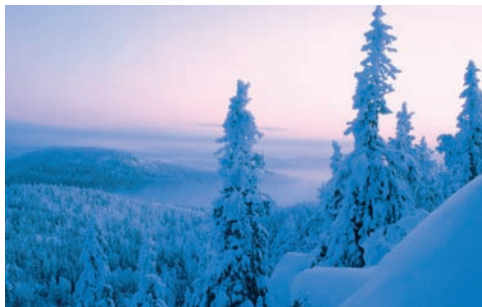
Because each customer is unique.

EXPERTLY BUILT



Our many years of experience have taught us the art of understanding and realising the vision of our customer.

FINEST RAW MATERIAL

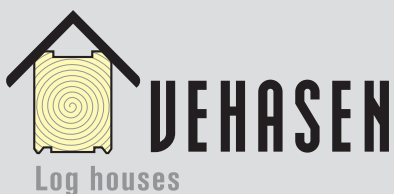


Premium quality raw material from pure, natural Finnish forests.

CUSTOMER CARE



Comprehensive customer service is provided by Vehasen and our international partner network, which are both committed to implementing our customers' individual requirements.



Contact us today to get started on
designing your log home with us.
Let's make that dream a reality!

Vehasen Saha Oy
Sahantie 20, FI-25110 Kruusila, Finland
tel. +358 2 777 610, fax +358 2 728 6239
info@vehasen.com
www.vehasen.com